

SILLING
ARCHITECTS



DELAWARE COUNTY
COMMON PLEAS COURT



DELAWARE COUNTY COURTHOUSE
SILLING ARCHITECTS

CONTENTS

FIRM PROFILE

TEAM LEADERSHIP

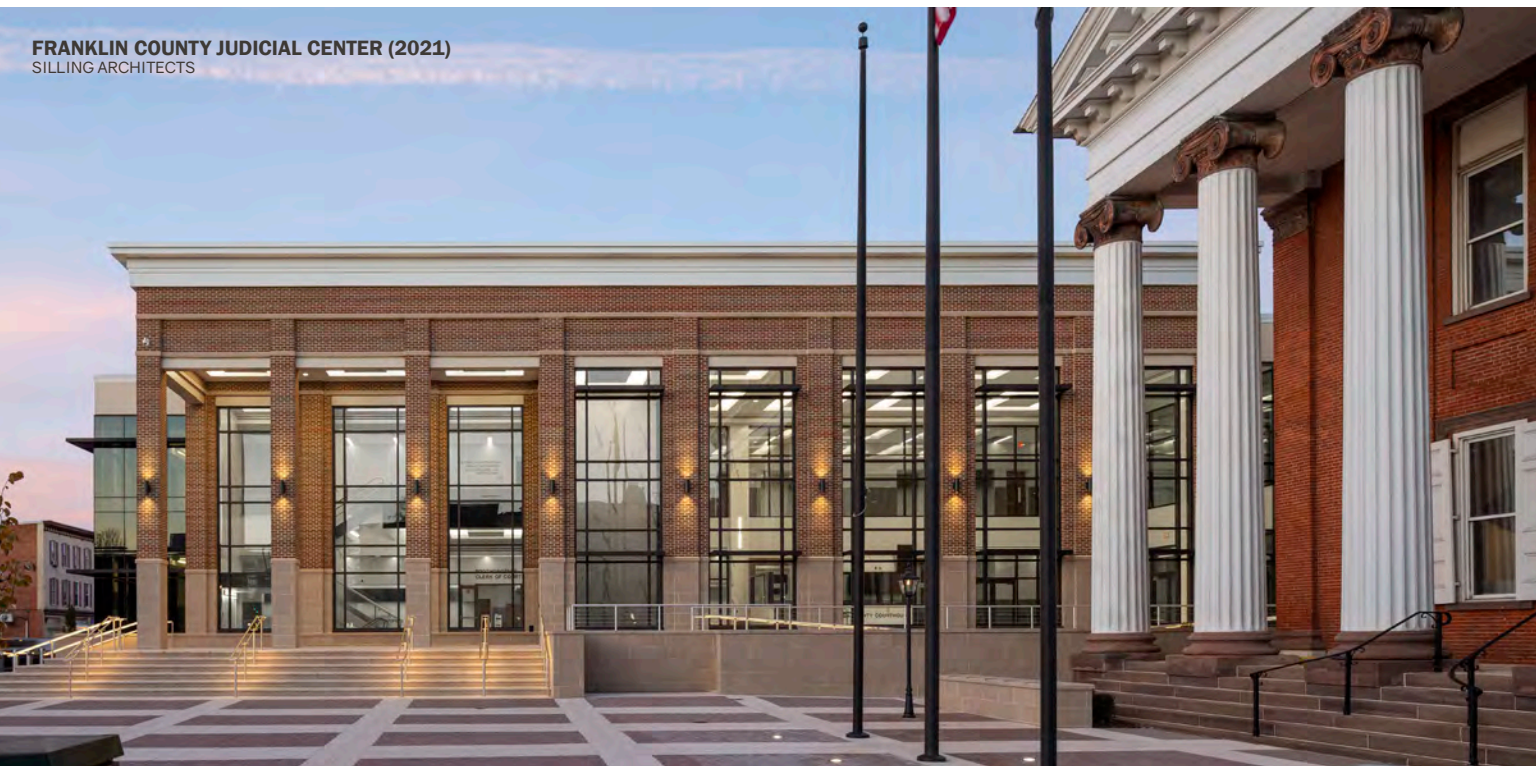
FEATURED COURTHOUSE PROJECTS

CLIENT REFERENCES

BOONE COUNTY COURTHOUSE (1921)
SILLING ARCHITECTS



FRANKLIN COUNTY JUDICIAL CENTER (2021)
SILLING ARCHITECTS



“Each Generation Develops a Courthouse Appropriate to Their Place and Time”

SOUTHEAST STUDIO

605 E. Robinson Street
Suite 630
Orlando, FL 32801
1.321.296.8100

NORTHEAST STUDIO

405 Capitol Street
Upper Atrium
Charleston, WV 25301
1.304.346.0565

SILLING ARCHITECTS - FIRM PROFILE

Established in Charleston, West Virginia in 1902, Silling Architects specializes in court facility planning and justice architecture design for municipal, county, and state governments throughout the United States. A quarter century ago, the current principals at Silling Architects, building on the firm's tradition and experience of nearly 100 years of public architecture, followed their passion for designing The Courthouse, the iconic representation of the American justice system and the most significant local symbol of democracy in our communities. The vision was born in 1995 with a new county judicial center in the small town of Winfield, West Virginia, and over the past several decades the firm and our associates have led over 70 courthouse projects nationwide totaling approximately 10 million square feet and 500+ courtrooms.

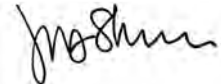
Throughout the last 25+ years, we have continued to invest in our people and evolve our collective understanding of The Courthouse. Our experience has served to deepen our dedication and crystalize our project approach and planning principles which result in unparalleled functionality, and a timeless response to the broader context in service to its' community for generations.

Modern technology and the dedicated support of our offices and associates located across the country enables an extraordinary level of client service and highly effective collaboration for projects located anywhere throughout the United States. We blend both in-person and virtual support to fit the particular needs of each justice project. Client service is built on an understanding of each project's unique composition and complexity of stakeholders. Every project is led throughout the process by our firm principals, courthouse planners, and designers who provide the collective experience embodied in \$2.1 billion in courthouse construction value.

On the following pages we invite you to examine the wide variety of courthouse projects within our portfolio. As will be seen, each project is a unique response to the many factors of commodity and culture. Indeed, each courthouse is a highly customized design located in both intimate communities as well as large metropolitan areas, speaking to the particular nuances of each project's context, both in terms of place and time.



Thomas M. Potts
Principal



Jody S. Driggs
Principal

LEADERSHIP



TOM POTTS, AIA
Principal

Tom is a Principal at Silling Architects and is a twenty-six year member of the firm. He provides leadership, direction, and management to all aspects of firm including the mission, design quality, and corporate culture. In addition to the broad based firm management, Tom is a skilled Project Manager and recognized leader of Justice Facility Planning with decades of experience programming and designing courthouses, detention/correctional institutions, and law enforcement facilities. He oversees projects from inception to completion, working closely with clients and the construction industry to insure the success of projects under his direction. He takes a "hands-on" approach to every project, working closely with clients to define and detail requirements for their facilities.

EMAIL: tpotts@silling.com
PHONE: 321.296.8100



JODY DRIGGS, AIA
Principal

Jody is a twenty-five year member of Silling Architects and has served as a Principal since 2001. His primary focus within the firm is instilling a special notion of service and care in the way that we practice, rooted in a humility responsive to the level of trust our clients have in us. Jody's desire to serve exceptionally is a driving force in the studio's constant efforts of innovation and improvement. Jody also serves as an active design architect and project manager and appreciates the firm's opportunities to develop solutions for a diverse and ever-expanding client base. He seeks to understand the people within each project, and the stories that project means to tell, in order to customize a design team and engage in a discourse unique to every opportunity.

EMAIL: jdriggs@silling.com
PHONE: 304.721.4321



MICHAEL LEBOEUF, FAIA
Director of Design | Court Planner

As the Director of Design at Silling, Michael has focused on the master planning and design of courthouses and justice campuses for over 30 years--projects that represent substantial investments by our society. His work has contributed to the evolution of the modern courthouse and host cities through design that has enhanced building efficiency and transformed courtroom design and court operations through design excellence. He has served as the Lead Designer and Courts Planner on 40 courthouses compiling to be over 600 courtrooms and over 8,000,000 square feet of courthouse facilities around the United States. To date his design work has received 60 awards for design excellence.

EMAIL: mleboeuf@silling.com
PHONE: 321.296.8100



MARIE MCCAULEY, AIA

Architect | Project Manager

Marie is a registered architect that consistently pushes for innovative, user-focused design solutions. With over 13 years of experience, she has been serving a multitude of projects for our justice, civic, and educational clients. As a project manager, she collaborates with staff and consultants throughout the design process, maintains day-to-day project coordination and communication, and is responsible for architectural design and detailing. Both clients and coworkers appreciate Marie's aptitude for organization, clear communication, and team building.



JEREMY JONES, AIA

Architect | Project Manager

Jeremy has nearly 20 years of experience in architectural planning and design with a primary focus on our firm's courts, law enforcement, corrections/detention, and public safety projects. As a project manager, he provides valuable leadership in delivering high-quality, client-oriented services from initial planning through design and construction. Exceptional communication and technical skills allow him to effectively build consensus among project stakeholders.



BRIAN ESTEP

Architect | Project Manager

Brian is a Senior Project Architect with over 28 years of experience serving a variety of building typologies, most notably within the law enforcement, courts, civic, and educational markets. He is primarily responsible for day-to-day project activities including programming, design, construction document production, and coordination of the architectural and engineering disciplines, supporting public agency projects with thoughtful, analytical, and responsive designs.



RALEIGH COUNTY JUDICIAL CENTER
SILLING ARCHITECTS

FEATURED COURTHOUSE PROJECTS

FRANKLIN COUNTY JUDICIAL CENTER

DELAWARE COUNTY COURTHOUSE

WEST VIRGINIA SUPREME COURT OF APPEALS

CABARRUS COUNTY COURTHOUSE

MONONGALIA COUNTY JUSTICE CENTER

RALEIGH COUNTY JUDICIAL CENTER

MARTINSBURG MUNICIPAL COURT

MORGAN COUNTY COURTHOUSE

CALAVERAS COUNTY COURTHOUSE

SACRAMENTO JUVENILE COURTHOUSE

U.S. GREENVILLE COURTHOUSE

OSCEOLA COUNTY GOVERNMENT CENTER

DENNIS MAES PUEBLO COUNTY JUDICAL CENTER

ALACHUA COUNTY COURTHOUSE

SOUTH COUNTY COURTHOUSE

PINELLAS COUNTY FAMILY COURTHOUSE

ORANGE COUNTY COURTHOUSE COMPLEX

FRANKLIN COUNTY JUDICIAL CENTER

CHAMBERSBURG, PENNSYLVANIA

130,000 SF | \$35 MILLION | 2021

The new 130,000 gsf judicial center includes administrative office departments for the Common Pleas, District, and Magistrate Courts, Clerk of Courts, Public Defender, Juvenile Probation, Adult Probation, Sheriff, and the District Attorney.

The upper levels include courtrooms of varying sizes and supporting judges' chambers and admin spaces. The subterranean sallyport with central holding offers isolated secure elevator transport of detainees to intermediate holding cells between the courtsets. Below grade protected judges' parking provides access to secure vertical circulation paths to the chambers above. The existing

courthouse (with additions) has been partially reprogrammed to support a portion of the aforementioned departments. A subtle and unobtrusive pedestrian bridge softly engages the former structure to intermingle all court activities. The high-volume entry lobby is strategically placed biaxially with the historic courthouse to further bow in formal significance, yet houses the single point of entry for queuing and screening. The approach to the welcoming entry portico is served by a grand stair and a subtractive treatment of the colonnade opposite the infilled lobby condition. This extends the rhythm of the courthouse's vertical fenestration and provides a covered portico leading to the largely accepting glass storefront entry doors.





SECOND FLOOR PLAN



DELAWARE COUNTY COURTHOUSE

DELAWARE, OHIO

160,000 SF | \$39 MILLION | 2017

Delaware County, Ohio is the fastest growing county in the state of Ohio with a population set to exceed 200,000 by 2018 (population 67,000 in 1990). This explosive growth, in addition to similarly increasing court caseloads and the recent addition of a new Domestic Relations Court Judge, necessitated the design and construction of a new courthouse on the county seat's judicial campus exclusively for county court operations.

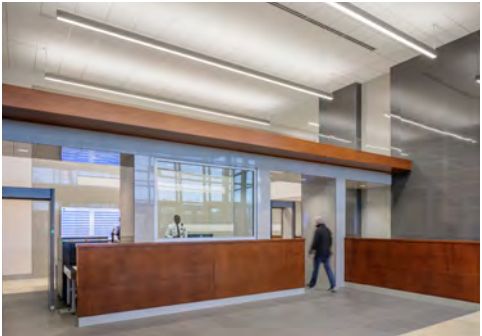
The new 160,000 square foot courthouse includes administrative office departments for the Clerk of Courts, Adult Court Services, and the Common Pleas Court. The upper levels include three large courtrooms and six hearing rooms with supporting judges' chambers, jury deliberation and administrative spaces. The third floor accommodates a grand jury room, as well as jury queuing and assembly spaces. A below grade parking garage supports protected judges' and staff parking as well and provides access to secure vertical circulation paths to the floors above. The garage also houses an inboard sallyport with central holding that offers isolated secure elevator transport of detainees to intermediate holding cells between the court sets. A secondary staff entry at grade graciously connects the neighboring county administration building inhabitants to secure staff circulation cores within the new courthouse.

Through in-depth reviews with the local historic preservation committee and zoning commissions, the design concept responds with an elegantly meshed contextual nod to the Italianate fabric of historic Delaware while stepping into a modernized composition of progressive materials and forms on the exterior.

AWARDS: AIA WV Merit Award for New Construction

PUBLICATIONS: NCSC Retrospective of Courthouse Design 2010-2020, 4th Edition





WEST VIRGINIA SUPREME COURT OF APPEALS

CHARLESTON, WEST VIRGINIA

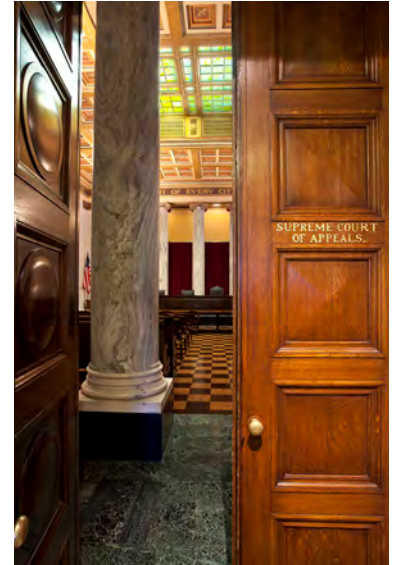
33,265 SF | COST CONFIDENTIAL | 2013

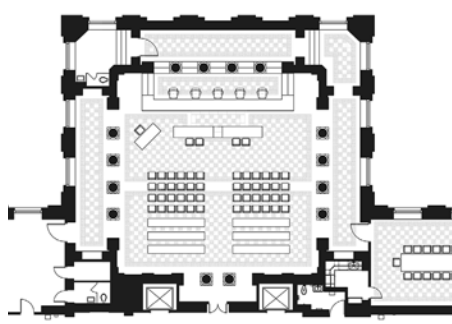
Located within the East Wing of the Cass Gilbert-designed West Virginia State Capitol Building, the State Supreme Court of Appeals spaces underwent a comprehensive renovation led by Silling Architects through multiple phases of design and construction. While significant upgrades were required to address accessibility, security, technology, building systems infrastructure, and modern courts operations, an overarching theme of historic sensitivity to the original design intent informed all project decisions.

Interior restorations of the grand courtroom were completed through extensive research of historic documents, and the colors and textures of its beautiful coffered ceiling provided inspiration for new finish selections throughout. Public entry and circulation spaces to the WVSCA suite received new built-in wood casework, carefully detailed in oak raised panels and granite work surfaces, to compliment the restored interior doors and transomed frames, with special attention paid to new lighting upgrades that highlight points of engagement and accentuate original details.

The administrative spaces of the Clerk of Courts were completely reconfigured, incorporating an appropriate combination of private office and open work spaces to meet the future needs of the judicial staff. Cork flooring materials and patterns renew original interior design concepts, while slightly more relevant and minimal wood profiles used at the base, cap, and opening trims subtly mark the transformation's place in time.

Silling's architects and interior designers worked closely with each of the Justices of the Supreme Court to fully renovate their private chambers, restrooms, and law clerk spaces, maintaining a consistency in the design theme while allowing for uniquely individual expressions. Customization of flooring inlays, furniture designs, and artwork befitting to the high court bring the finishing touches to the restoration of these iconic, landmark interiors.





CABARRUS COUNTY COURTHOUSE

CONCORD, NORTH CAROLINA

312,000 SF | \$109 MILLION | EST. 2024

Silling Architects is serving as the Architect of Record for the design and construction of a new courthouse located in Concord, North Carolina. Built over 45 years ago, the existing 1970s era courthouse was built at a time when the county population was approximately 80,000. With a current county population of 206,000 and a 130% increase in court caseload activity over the last three decades, a plan for a new and expanded courthouse had become a top priority for the County's Board of Commissioners.

Representing a significant architectural development within the urban core of Concord, and expounding on the social and civic legacy of the courthouse site, the new Cabarrus County Courthouse will take a bold step in contributing to the continued revitalization of the downtown. While the existing courthouse fronting Union Street will be completely renovated and continue to be utilized to serve and support the administrative functions of the court, a new addition and new public entry element will reshape the identity of the courthouse campus. The intentional siting of this new primary entry is the defining element of the concept, and establishes a new public plaza space that honors the historic notion of courthouse entry while informing future redevelopment North along Church Street and beyond.

Overall the project will include 240,000 square feet in new construction, 72,000 square feet in existing facility renovations, four Superior Court jury-capable courtrooms, six District Court courtrooms, 2 future courtrooms, a 45,000 square foot shell space for future expansion, and another 14,000 square feet of expansion space in the new facility.





MONONGALIA COUNTY JUSTICE CENTER

MORGANTOWN, WEST VIRGINIA

84,000 SF | \$20 MILLION | 2016

Originally built in the 1970s, the former Harley O. Staggers Federal Building and regional post office presented a very unique and exciting opportunity to serve the growing judicial services of Monongalia County. Having been vacant and closed for more than eight years, county leaders would ultimately purchase the 84,000 square foot, four-level building in 2007. The project made responsible use of the public investment while also contributing to the overall reduction of environmental impact in reuse of the existing building stock. The design's resulting expression provided a strong community presence with an elegant exterior facelift while also introducing a more ordered, functional and secure setting for the County's court operations.

The design implements three major ideas: clear and well-defined public spaces with a strong sequence from the entry to the courtrooms; introduction of natural daylighting; and the use of high contrast interior finishes to create dignified spaces. High volume functions of the court are located near the lobby and on lower floors. The circulation is simple, direct and distinctly separated into public, private and secure paths of movement.

Courtrooms are located on the upper floors stacked and grouped inwardly oriented on the floor plan. They are served by intermediate secure detainee elevators and holding cells as well as jury deliberation rooms in immediate adjacency. Courtrooms are equipped with zoned lighting as well as state-of-the-art technology and audio visual features including interactive monitors, evidence presentation cart, sound system with assisted listening, and large format screens with video conferencing capabilities all fully operational from sophisticated bench control software.

AWARDS: AIA WV Honor Award for Excellence in Architecture

PUBLICATIONS: NCSC Retrospective of Courthouse Design 2010-2020, 4th Edition





THIRD FLOOR PLAN

- 1 - Circuit Court
- 2 - Jury Assembly / Future Courtroom
- 3 - Future Judge's Suite



RALEIGH COUNTY JUDICIAL CENTER

BECKLEY, WEST VIRGINIA

70,000 SF | \$16 MILLION | 2012

The new Raleigh County Judicial Center is located on a tight urban infill site at the main intersection in the center of uptown Beckley, West Virginia. The intersection marks the convergence of the historic Raleigh County Courthouse, the Robert C. Byrd Federal Courthouse, and the new Raleigh County Judicial Building. The new 70,000 square foot judicial center features three state-of-the-art circuit courtrooms, a future fourth circuit courtroom, two magistrate courtrooms, a third future magistrate courtroom, and two family courtrooms. A secure vehicular sally port is accessed from the lower level located along north side of the building. A central holding component allows for detainees to be safely and securely transported into the facility, and then vertically via secure elevators with direct access to the courtrooms. Additionally, the courts are supported by the Circuit and Magistrate Clerks, with related service, administrative, and records storage space.

The design of the Judicial Center responds to the urban context addressing the intersection with a clock tower/ vertical circulation component on axis with the pedestrian walk and courthouse greenspace. The building edge is directly adjacent to the city sidewalk bordering both significant elevations. The long west elevation features a colonnade relating to a similar feature in the Federal Courthouse and allows sight-lines for pedestrians and vehicular traffic to the historic county courthouse to be expanded upon arrival to the city center. The architectural expression takes its cues from both courthouses. The fundamentals of building massing, proportion, rhythm, scale, materials, and fenestration are extracted and integrated to establish a new identity for the new facility.

AWARDS: AIA WV Honor Award for Excellence in Architecture

PUBLICATIONS: NCSC Retrospective of Courthouse Design 2010–2020, 4th Edition





MARTINSBURG POLICE DEPARTMENT & MUNICIPAL COURT

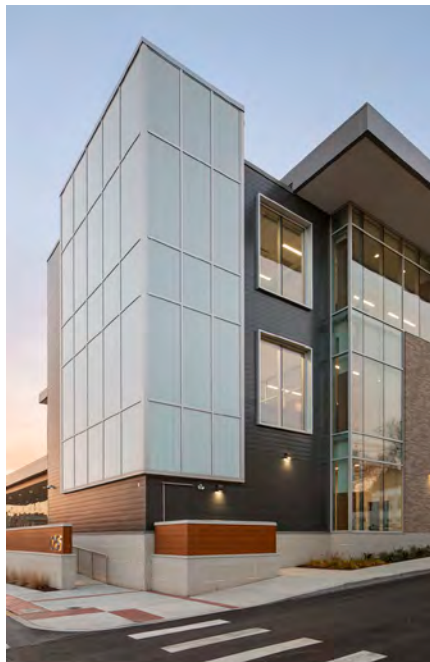
36,000 SF | \$11 MILLION | 2020

MARTINSBURG, WEST VIRGINIA

With a growing Police Department and Municipal Court operations the City of Martinsburg was in need of additional space for these services. The city purchased a parcel of property just steps away from City Hall on the corner of West Race and North College Streets that had previously been home to the local Chapter of the American Legion as a possible location for a new Police headquarters and Municipal Court. Working closely with representatives from the City, Police Department and Municipal Court, Silling performed programming services and developed a graphic test-fit as a means to demonstrate how the program could fit in a new building constructed on the purchased property.

The massing of the building is a representation of the interplay between solid and void and how that form is created relative to the usage of the spaces within the building. A community room is located on the first level just off of the main public lobby and security screening area. The remainder of the first level consists of a new multi-cell holding area, vehicular sallyport, locker rooms for police officers and other police support spaces. The Police Department is located on the second level with its own separate public waiting area and large squad room with glass façade that provides natural light and views down Race Street to the downtown and the adjacent public parking area that serves City Hall. The Municipal Courtroom and associated spaces are located on the third level with a spacious public waiting area with an easily visible courtroom entrance and private circulation for staff. Transaction windows for the Court Cashier, Court Clerk and Magistrate are located off the public lobby. The third level features a ribbon of clerestory windows allowing natural light into the courtroom and offices located along the perimeter walls.

AWARDS: AIA WV Honor Award for Excellence in Architecture





MORGAN COUNTY COURTHOUSE

BERKELEY SPRINGS, WEST VIRGINIA

47,000 SF | \$11 MILLION | 2010

On August 8, 2006, fire destroyed the Morgan County Courthouse located diagonally across the main intersection from the state park. Constructed in 1924, it was the second courthouse located at the site and what would be considered as the most prominent public property in the community. It was a relatively simple, neo-classical, two story, and yellow brick building that featured a clock-tower cupola above the classical cut-stone arch entry. The entry was oriented directly to Fairfax Street and a public green space/boulevard that was at one time the main road leading east toward Virginia.

A clear mandate from the community was to develop a design that was reminiscent of the old courthouse and add to the architectural character and the tourism spirit of Berkeley Springs. The new courthouse has a dominant corner entry element that anchors the building composition and addresses both Fairfax and Washington Streets responding to the current urban circulation patterns, by contrast to the single entry from Fairfax Street of 1924.

The building program includes a mix of county administrative offices on the first floor and county judicial functions including Circuit Court, Family Court and Magistrate Court on the second and third floors. The design includes best practice principles of public screening at the access point to vertical circulation, and clear separation of public, staff and in-custody litigants. The technical systems include state-of-art access control, courtroom digital switching and evidence presentation technology.

AWARDS: AIA WV Honor Award for Excellence in Architecture

PUBLICATIONS: NCSC Retrospective of Courthouse Design 2010–2020, 4th Edition





COUNTY OF CALAVERAS SUPERIOR COURT

SAN ANDREAS, CALIFORNIA

44,261 SF | \$22 MILLION | 2014

The design and planning of the Calaveras County Courthouse was influenced by several factors and were rooted in the expression of the courthouse as representative of our democracy and a place of importance in the local community. The semi urban context, set among delicate oak woodlands and natural topography, was also a source of inspiration. A small archaeological site with Indian grinding stones linked the parcel to an earlier time. This historical connection and views to the mountains beyond became an integral part the building story and design. In short, the building is a gesture toward our place and time, layered with elements of our past and the dignity and honor associated with courthouses.

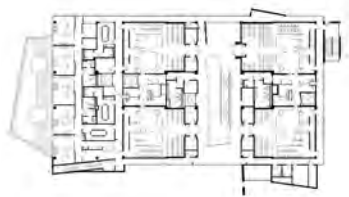
The base of the building is symbolic of the natural surroundings. Mitigating the extreme grade changes, free flowing and organic but weighted and grounded in its materiality, it becomes the wellspring from which the upper floors emanate. Programmatically the first-floor functions reflect the same ideas. The clerk of court, jury assembly and the court support offices are all housed on the first level. These components are the foundation and support network to the court system. The upper level of the building is ordered, orthogonal, and balanced. Here the courtrooms are expressed in juxtaposition against the base. Just as the court system provides order and guidance to our changing this literal interpretation provides a resolution to the building massing. At the roof line the (4) courtroom volumes are expressed against a datum of metal which is symbolic of the mountains beyond as they rise above the horizon.

Photography: Chip Allen Architectural Images

Michael LeBoeuf's Role: Lead Designer and Courts Planner



SECOND FLOOR





SACRAMENTO JUVENILE COURTHOUSE

SACRAMENTO, CALIFORNIA

97,400 SF | \$18 MILLION | 2006

This new juvenile courthouse is 97,400 SF, and three stories. The two upper court floors include four juvenile courtrooms per floor, paired in groups of two around court holding areas, with chamber/clerk suites, administration and court support functions adjacent. Located on the first floor is the juvenile delinquency reception/clerical support, media center, children's waiting area, staff break areas, court security and control, in-custody delivery and transfer/staging area, MIS, building services and the main entrance lobby.

The Design Team worked both "inside-out" and "outside-in" to define the building massing and articulation. The massing is composed of several separate volumes and is a reflection of the functional aspects of the building. The first and largest is the main courts building and is the densest component. It's material coding is the darker concrete precast. At the southern edge is the judge's chambers and clerks' offices, these are coded with a lighter precast concrete and incorporates a vertical window and fin expression. The north face of the structure is primarily the main public circulation and is expressed in a horizontal curtain wall. The overall geometry of the building massing is conceived to mend the orthogonal geometry of the exiting campus and the 8-degree sweep of Kiefer Road. This semi-radial geometry originates to the west near the visitor center and unfolds to the east.

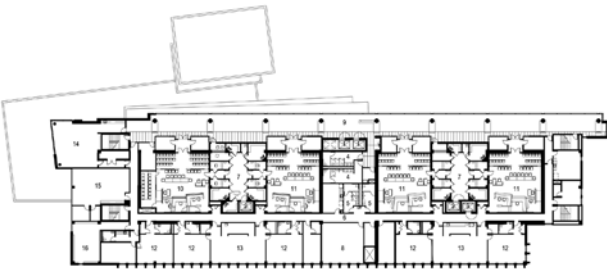
This assemblage of parts allows the building to have an articulated program coding. Additionally, the massing is more pedestrian focused at the base and attenuated as it reaches towards the sky, thereby creating a more visually striking and proportional silhouette. It also allows the building to respond to simultaneity of scales, creating both a gentle transition to the smaller size and scale of the buildings on the adjacent existing campus.

Photography: Chip Allen Architectural Images

Michael LeBoeuf's Role: Lead Designer and Courts Planner



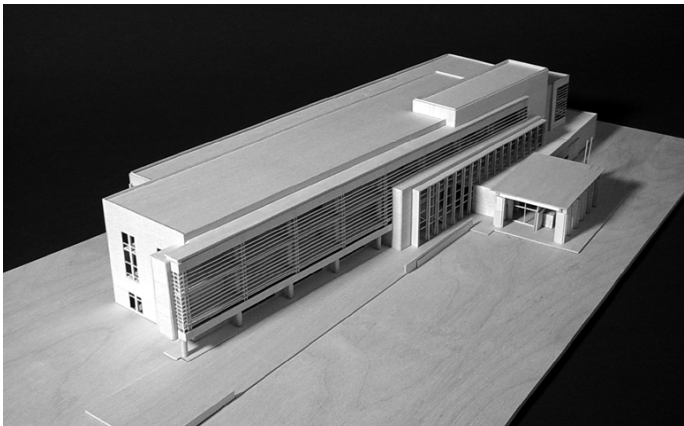
ELEVATIONS



THIRD FLOOR PLAN

1. PUBLIC ELEVATOR
2. IN-CUSTODY ELEVATOR
3. SECURE ELEVATOR
4. PUBLIC RESTROOM
5. STAFF RESTROOM
6. SECURE CORRIDOR
7. HOLDING AREA
8. MECHANICAL ROOM
9. PUBLIC CORRIDOR/WAITING
10. HIGH VOLUME COURTROOM
11. LITIGATION COURTROOM
12. JUDGE'S CHAMBERS
13. COURT CLERK
14. CONFERENCE ROOM
15. M.I.S. TRAINING ROOM
16. JUDICIAL/STAFF LIBRARY

* Michael LeBoeuf experience from previous firm



U.S. GREENVILLE COURTHOUSE

GREENVILLE, MISSISSIPPI

55,700 SF | \$42 MILLION | EST. 2023

The new U.S. Courthouse in Greenville, Mississippi will be an anchor for revitalization and future development in the City of Greenville. Its design is compatible with the character of the historic district while it reflects the dignity, enterprise, vigor, and stability of the United States Government. The new building is 55,700 GSF including three interior secure structured parking spaces. The courthouse will provide one District courtroom and one Magistrate courtroom. Tenant agencies will be the United States Fifth Circuit District and Magistrate Courts, United States Marshals Service, United States Probation Office, and GSA's Public Buildings Service with trial prep space provided for the Federal Public Defender and United States Attorney's Office.

The goals for the design of the project include creating a southern civic landmark that is meaningful, respectful, and progressive and honors the character and history of Greenville. Some of today's court buildings have drifted away from the architecture of the meaningful figure in the community, and instead, have substituted the use of an associated imagery. (Courtrooms are sometimes enveloped inside corporate office-like structures or encased inside historical facsimiles.). In both cases, the courthouse form presents a static public fortress with an empty image of power that obscures the living presence of the judicial process in the community.

Firm Credit: Duval Decker Architects with EDR

Michael LeBoeuf's Role: Courts Planner



* Michael LeBoeuf experience from previous firm



OSCEOLA COUNTY GOVERNMENT CENTER

KISSIMMEE, FLORIDA

387,000 SF | \$61 MILLION | 2004

Osceola County is one the fastest growing in Central Florida Counties and needed to expand its existing historic courthouse and adjacent administration building. Over the years the historic courthouse had suffered from injudicious renovations and a series of unfortunate annexes. The new campus master plan creates a strong government center that re-establishes the historic structure in its former state and as the traditional "courthouse on the green," while introducing a new contemporary justice building that maintains a sensitive response to the historic courthouse and surrounding neighborhood.

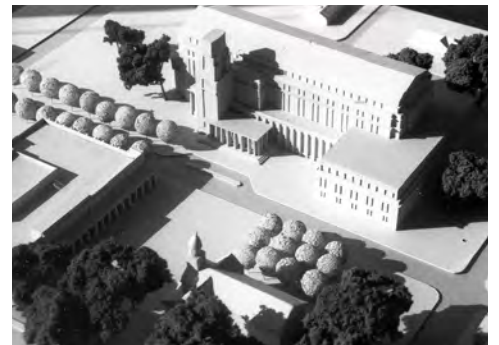
The new county government center includes a new 247,000 SF courthouse, a renovated 140,000 SF administration building, and the aforementioned restored 18,000 SF historic courthouse. In response to the historic courthouse's scale and importance the siting of the new building entries is a direct response and form a significant dialogue with the historic courthouse. Both the new courthouse and renovated administration building's architectures reflects the landmark's traditional architecture with careful attention to the pedestrian scale and entry porticos of each building. Complementary building materials, fenestration patterns, building massing, and details work together with the historic building to form a visually unified campus surrounding the civic green space.

Photography: Gary Knight Photography

Michael LeBoeuf's Role: Lead Designer and Courts Planner



* Michael LeBoeuf experience from previous firm



DENNIS MAES PUEBLO COUNTY JUDICIAL CENTER

PUEBLO, COLORADO

176,800 SF | \$54 MILLION | 2014

Designed to replace the existing county courthouse built in the late 1960s, this building will become one of the county's significant civic structures. The 182,350 square foot, five-story building houses 16 district, ceremonial and first appearance magistrate courtrooms along with Clerk of Court, jury assembly and county probation offices. The secure basement level includes central holding and booking. The site area is approximately six acres and is located at the west fringes of the CBD.

The curved shape seeks to connect the building abstractly to the historic courthouse and the public library, creating a subtle "bracketing" of the central Pueblo downtown. The bent courtroom bar also creates a gentle gesture to the 5th Street axis which terminates into the site. The second component of the building is an east-west element which is an extension of the plinth which grounds the curved bar. It moves under the tower, turning up on the west side

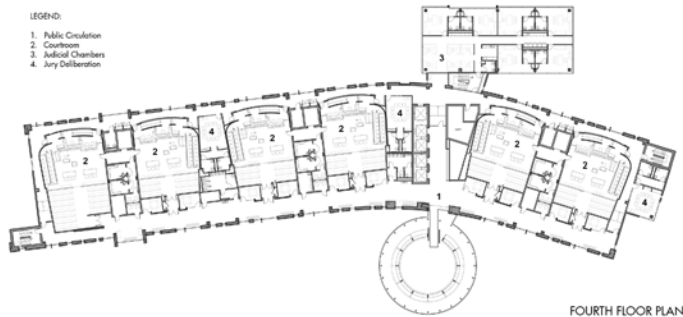
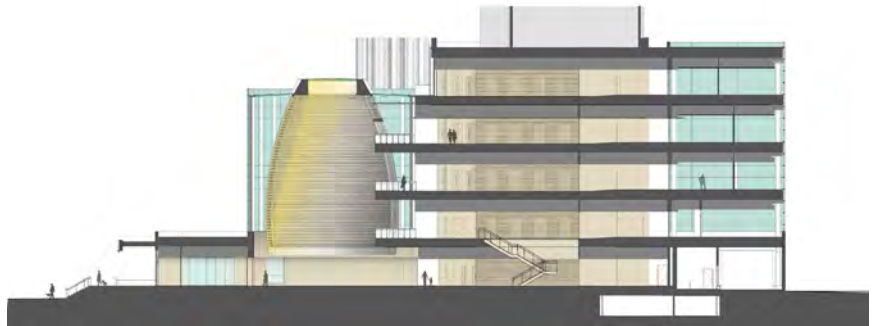
to become the judge's chambers, and extending to the east to form the entry and jury assembly space. The rotunda uses the kiva as a unique precedent. A ceremonial space typical of most Pueblo Indian cultures, the kiva is a circular space in plan. The design team has attempted to interpret this idea of outer enclosure and inner sanctum by placing a wood-framed aedicule, or room within a room, within a glass cylinder. The form of this structure is reminiscent of the coke ovens sprinkled throughout the region.

The color palette of the building is derived from observations of the local landscape. The layering of the forms in the elevations is meant to be reminiscent of the layered nature of most of Georgia O'Keeffe's landscape paintings of the region. The glass curtain wall envelope takes its cues from the monochromatic geometric patterns of Anasazi pottery, creating a slightly de-materializing effect which emphasizes the vertical line while simultaneously diminishing the scale.

Photography: Frank Ooms Photography

Michael LeBoeuf's Role: Lead Designer and Courts Planner





FOURTH FLOOR PLAN



ALACHUA COUNTY COURTHOUSE

GAINESVILLE, FLORIDA

119,000 SF | \$18.4 MILLION | 2003

This new County Criminal Courthouse houses 11 new courtrooms and has a total building gross square footage of 119,000 square feet. In an attempt to solve the county's operational issues of having two courts buildings (one civil and one criminal), the new criminal courts facility brings with it the Clerk of the Court Criminal operations, a portion of the Court-Reporting department, and staff from Court Administration. A new jury assembly space that is located in the Criminal Courthouse will support both buildings, making up for the lack of adequate assembly space in the existing courthouse.

The site is approximately 6.2 acres, encompassing 6 blocks a half mile west of the existing courthouse in downtown Gainesville, Florida. Since the 6-block site is more than adequate to support the new Criminal Courthouse, future growth beyond this project can be accommodated on this site. The Criminal Courthouse at four floors produces a ground floor of approximately 32,000 square feet. Sited to the northeast corner of the site, this allows for future expansion scenarios to occur to the south. Up to as many as three future construction phases will make this site the new judicial complex for downtown and County.

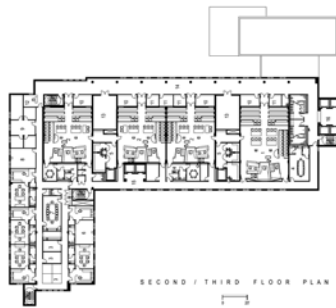
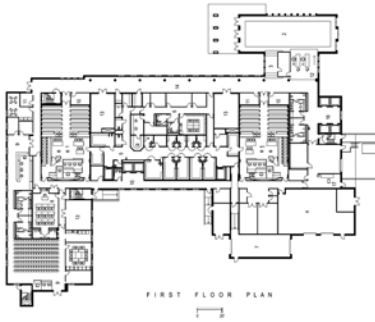
The asymmetrical 'Z' shaped plan relationship of tower to low wing and entry pavilion creates the opportunity to form a powerful urban space and entry forecourt. This plaza not only allows the tower to reinforce the urban edge of Main Street but also becomes a major component of the entry sequence in to the building.

Photography: Rink Design Partnership, Inc.

Michael LeBoeuf's Role: Lead Designer and Courts Planner



* Michael LeBoeuf experience from previous firm



SOUTH COUNTY COURTHOUSE

LAGUNA NIGUEL, CALIFORNIA

DESIGN CRITERIA PACKAGE | 252,000 SF | \$42 MILLION | 2006

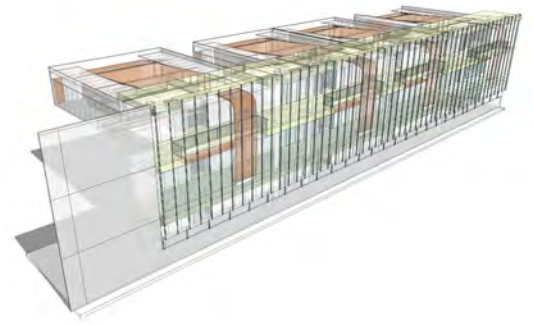
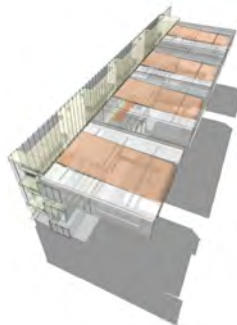
Located in Laguna Niguel, California, this new courts facility will provide badly needed litigation space for this area of Orange County. The site is approximately 28 acres located on a gentle plateau bounded on one side by a large hill, and on the other three by busy arterial roads. As part of an earlier master planning phase, the courthouse is slated to become the centerpiece to a new public / government center.

The courthouse has been sited along a roughly north-south axis, wrapping around an existing 45,000 sf courthouse that was constructed in the 1960s. A civic plaza runs parallel to the building, interrupted only by the entry pavilion. The new building is approximately 207,000 gsf with four levels including a basement. Organized into two major component pieces, the building is comprised of a court wing which runs parallel to the civic plaza, and a smaller administrative wing which is set perpendicular to the first. The courtrooms are typically arranged in pairs about a shared in-custody defendant holding area. Levels 2 and 3 of the court wing contain six courtrooms each with jury deliberation and judges' chambers lined up along the outside wall. Level 1 has two courtrooms and the clerk of court with attendant payment counters. The administrative wing houses the district attorney, public defender and jury assembly spaces on two levels. A partial basement contains the secure staff parking area as well as the sallyport and central holding area.

Firm Credit: GKK Works

Michael LeBoeuf's Role: Lead Designer and Courts Planner





PINELLAS COUNTY FAMILY COURTHOUSE

CLEARWATER, FLORIDA

DESIGN CRITERIA PACKAGE | 81,200 SF | \$39 MILLION | 2017

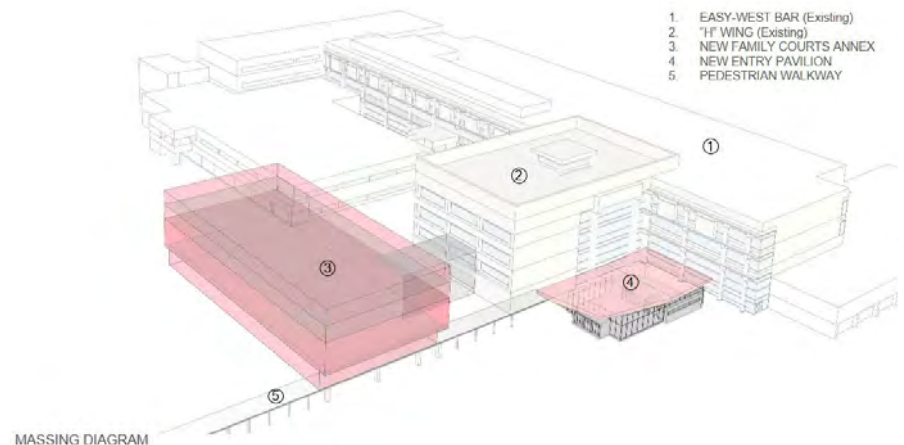
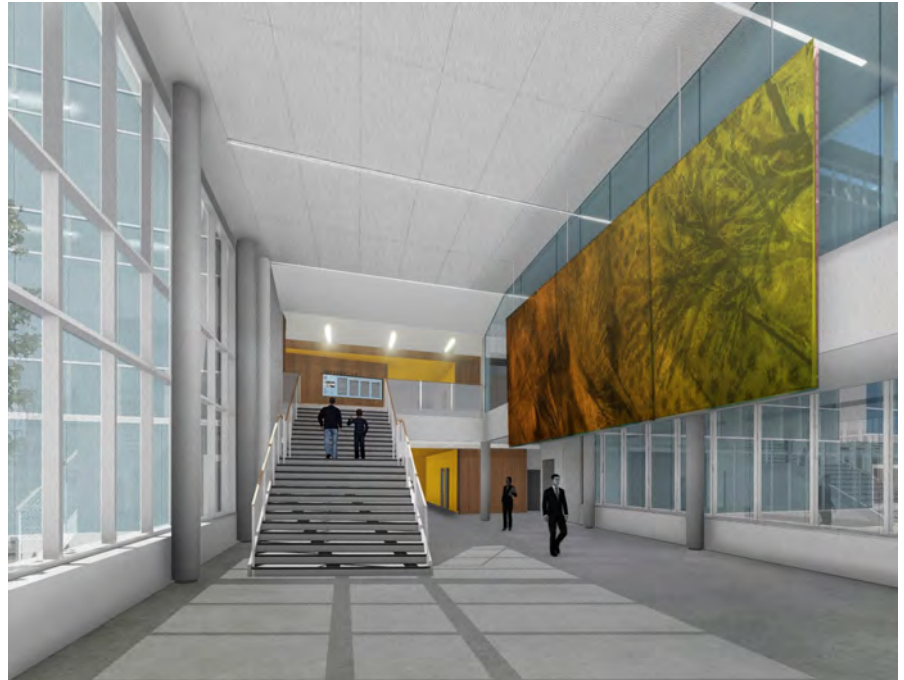
Enhancing the operations of the existing 1994 County Courthouse with a series of new additions and renovations was the county and courts overriding goal for the project. The scope of the Design Criteria Package included a new 76,700 BGSF family courts annex, a new 4,500 BGSF public entry pavilion and a series of interior renovations to the clerk of court and jury assembly areas.

In response, the design of the new family courts annex will consolidate four new family courtrooms, related supporting functions and the court administration into one new building that will specifically serve the special needs of families. The county and courts understand that families, while part of the upper courts division, requires a unique and different type of space. In addition to the functional and site requirements, the spaces have been designed to alleviate stress and embrace the families in a manner that allows the building to become an advocate for the families.

Subsequently, the new public entry pavilion replaces the existing entry with a new structure that serves the entire building. The strategy of the public entry pavilion was to increase the public queuing, the number of security stations and public run off from those security stations. The design also included a refocus of the entry to the south in order to visually align the entry to the recently competed parking garage to the south.

Firm Credit: Mason Blau Associates

Michael LeBoeuf's Role: Lead Designer and Courts Planner





ORANGE COUNTY COURTHOUSE COMPLEX

ORLANDO, FLORIDA

COMBINED 1.5 MILLION SF | \$125 MILLION | 1998

The Orange County Courthouse required a design that maximizes security and efficiency, is compatible with its surroundings, looks to the future, and creates an image of civic and judicial presence in the heart of Orlando, Florida.

Comprised of a five-building complex, this fifty-two courtroom court complex integrates state attorney, public defender and a 1,500-car parking structure into one campus. The strong urban courtyard organization embodies the Central Florida region and anchors a major portion of the central business district at the mid-town core.

The representational nature of this facility was expressed in order to make it distinguishable from all other buildings in downtown and to be recognizable as “the Courthouse.” Additionally, the exterior of the facility associates in our memories the image of a classical American courthouse: solid, dignified, and balanced. However, the metal curtain wall and metal detailing will give the building an important association to contemporary architecture. This combination assures that the design will have a contemporary relevance to our place and time.

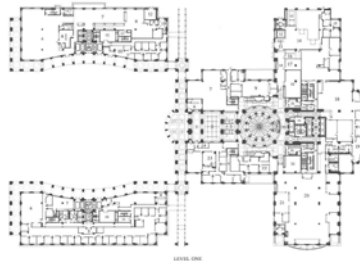
Contextual issues include urban space, building edge, orientation, and the termination of Magnolia Avenue axis by the narrow edge of the tower assures that construction of future buildings along Magnolia Avenue will not encroach on the silhouette of the court tower. A linear barrel vault roof encloses two Special Trials courtrooms on the 23rd level, and reinforces the Magnolia Avenue axis on the skyline, as well as the linear nature of Orlando.

Photography Credit: Gary Knight Photography

Michael LeBoeuf's Role: Lead Designer and Courts Planner



* Michael LeBoeuf experience from previous firm



ADDITIONAL COURTHOUSE PROJECTS

SILLING ARCHITECTS

Ukiah Courthouse Design Criteria Package - Ukiah, California

Winter Park (Orange County) Metric Drive Courthouse - Orlando, FL

Allegany County District Court - Cumberland, MD

Seneca County Joint Justice Center - Tiffin, OH

Barren County Judicial Center - Glasgow, KY

Athens-Clarke County Judicial Center Study - Athens, GA

Hoke County Judicial Center - Raeford, NC

Greenbrier County Courthouse - Lewisburg, WV

Southampton County Courthouse - Courtland, VA

Dickenson County Judicial Center - Clintwood, VA

Russell County Courthouse - Lebanon, VA

Buchanan County Courthouse - Grundy, VA

Union County Courthouse - Marysville, OH

Cambria County Courthouse Expansion - Ebensburg, PA

Harrison County Courthouse Annex - Clarksburg, WV

Lewis County Judicial Annex - Weston, WV

Jefferson County Judicial Center - Charleston, WV

Hampshire County Judicial Center - Romney, WV

Barrow County Courthouse Expansion - Winder, GA

Putnam County Courthouse - Winfield, WV

Putnam County Judicial Center - Winfield, WV

Mineral County Judicial Center - Keyser, WV

Hardy County Courthouse - Moorefield, WV

Cabell County Circuit Courtroom - Huntington, WV

Jones County Courthouse & Detention Center - Trenton, NC



Seneca County Joint Justice Center - Tiffin, OH

OTHER TEAM MEMBERS

Bryan Simpson U.S. Courthouse - Jacksonville, FL

George C. Young Federal Courthouse - Orlando, FL

Sherburne County Courts Center - Elk River, MN

El Paso County Courthouse Expansion - El Paso, TX

Robert T. Matsui U.S. Courthouse & Federal Building - Sacramento, CA

Howard H. Baker U.S. Courthouse - Knoxville, TN

Gilchrist County Courthouse - Trenton, FL

Orange County Juvenile Courthouse - Orlando, FL

Sparks Justice Center - Las Vegas, NV

City of Henderson Courthouse Expansion - Henderson, NV

Loudoun County Master Plan & Courthouse - Leesburg, VA

Gwinnett County Courthouse - Lawrenceville, GA

Kings County Courthouse - Hanford, CA

Yakima County Courthouse - Yakima, WA

Highlands County Courthouse Addition & Jail - Sebring, FL

First District Court of Appeals Annex - Tallahassee, FL

GSA Dirksen Federal Courthouse Renovation Study - Chicago, IL

The Warren Burger Federal Courthouse Study - St. Paul, MN

U.S. Courthouse Fergus Falls - Fergus Falls, MN

New Castle County Courthouse - Wilmington, DE

Crawford County Judicial Center - Girard, KS

Sarasota County Courthouse - Sarasota, FL

Paul G. Rogers U.S. Courthouse and Federal Office Building - West Palm Beach, FL

U.S. Federal Courthouse - Pensacola, FL

Palm Beach County Judicial Complex - West Palm Beach, FL



Bryan Simpson U.S. Courthouse - Jacksonville, FL

CLIENT REFERENCES + TESTIMONIALS

KYLE BILAFER

Area Manager of Operations
Cabarrus County, North Carolina
Concord, North Carolina
Phone: 1.704.920.3201
Email: KDBilafer@cabarruscounty.us

DAVE TOLLIVER

County Commissioner
Raleigh County Commission
Beckley, West Virginia
Phone: 1.304.255.9100
Email: ralcom@raleighcounty.com

CINDY WHETSELL

County Administrator
Lewis County Commission
Weston, West Virginia
Phone: 1.304.269.8200
Email: cindywhetsell@yahoo.com

JON MELVIN

Director of Facilities
Delaware County Board of Commissioners
Delaware, Ohio
Phone: 1.740.833.2100
Email: jmelvin@co.delaware.oh.us

THE HONORABLE MARTIN MCGHEE

Superior Court Chief Judge
Cabarrus County Superior Court
Concord, North Carolina
Phone: 704.262.5500
Email: Martin.b.mcgee@nccourts.org

FREDDIE MULLINS

Owner's Representative
Dickenson County, Virginia
Clintwood, Virginia
Phone: 1.276.926.8580
Email: mullinslaw@fempc.net

“As an experienced facility manager, I strongly recommend Silling Architects and their early approach to early court planning and programming. They have deeply invested themselves in the Cabarrus County Courthouse and understand the courthouse operations at depth.”

KYLE BILAFER

Cabarrus County, NC

“All of the expertise, vision, creativity, and responsiveness that was seen in their proposal and interviews has been delivered in our courthouse project.”

JON MELVIN

Delaware County, OH

“Silling's expertise, professionalism, and know-how have been exemplary. Not only was the design of our new building a remarkable, state-of-the-art concept, but also the level of communication and cooperation that you and your team have extended to us have been absolutely outstanding.”

GEORGE SWARTWOOD

Martinsburg, WV

H. RUS WARNE

WARNE, TUCKER, & PATTESON

SILLING ASSOCIATES SILLING ARCHITECTS



WARNE, TUCKER, SILLING, & HUTCHINSON

C.E. SILLING & ASSOCIATES

TUCKER & SILLING